

A Correction of Class II Malocclusion by Fixed Functional Appliance – A rare Case Report

¹Duevas J K, ²Aacho B, ³Alarcon GH, ⁴Martien L

¹⁻⁴Dental Practitioner, Dental Clinical and Pathologist, City Centre-120, Woodbury.

Corresponding Author: Aacho B, Dental Practitioner, Dental Clinical and Pathologist, City Centre-120, Woodbury.

Citation This Article: Duevas J K, Aacho B, Alarcon GH, Martien L, “A Correction of Class II Malocclusion by Fixed Functional Appliance – A rare Case Report”, IJHDC – January – February - 2023, Volume – 2, Issue - 1, P. No. 36 – 42.

Open Access Article: This is an Open Access article that uses a funding model which does not charge readers or their institutions for access and distributed under the terms of the Creative Commons Attribution License (<http://creativecommons.org/licenses/by/4.0>) and the Budapest Open Access Initiative (<http://www.budapestopenaccessinitiative.org/read>), which permit unrestricted use, distribution, and reproduction in any medium, provided original work is properly credited.

Type of Publication: Case Report

Conflicts of Interest: Nil

Abstract

Managing mild to moderate Class II malocclusion is a one of the common and major challenges to orthodontists. Class II discrepancies with mandibular deficiency during active growth are usually treated by functional appliances. Fixed functional appliances evolved due to the noncompliance with conventional myofunctional appliances. This case report illustrates the efficiency of Power Scope 2 in correction of skeletal Class II with mandibular deficiency in a patient aged 16 years who had reported with a chief complaint of forwardly placed upper front teeth.

This case with functional jaw retrusion was treated initially with MBT 0.018” prescription followed by Power Scope 2. Pre- and post-treatment cephalograms were obtained, and cephalon metric analysis was performed. Stable and successful results were obtained with a substantial improvement in facial profile, skeletal jaw relationship and overall Aesthetic appearance of the patient.

Keywords: functional appliances, MBT, Facial.

Introduction

Class II malocclusion presents a major and common challenge to present day orthodontics. It may be a skeletal or a dental class II. Among different skeletal and dental combinations that can create a Class II malocclusion, mandibular retrusion is one of the most common characteristics. Treatment of Class II malocclusion continues to be a great challenge that orthodontists face daily in clinical practice and depends entirely upon the severity of the problem and the age at which it presents for treatment.

Various orthodontic techniques and appliances have been introduced over the years to treat these problems and a popular treatment approach for correction of class II malocclusion with returned mandible is that of growth modulation through the use of various functional appliances.

Functional appliances are used to redirect the mandibular growth by forward posturing of the mandible when used

during the patient's pubertal growth spurt. In case of age beyond pubertal growth spurt or later stages of puberty, the use of fixed functional appliances like Jasper Jumper, Herbst, Ritto appliance, Eureka spring, Churro jumper, Forsus fatigue resistant device etc. are being used commonly to treat class II malocclusion.

Fixed devices for sagittal advancement of the mandible that do not require the patient's collaboration and that can be worn in association with fixed appliances have been introduced to the orthodontic community in order to overcome certain major limitations of removable functional appliances that is the need for patient cooperation and the lack of the possibility of combining the use of the fixed functional appliance with multibracket therapy in order to shorten treatment duration. These appliances have recently been gaining immense popularity as "non-compliance Class II correctors" and are highly useful in those group of patients who fail to commit themselves to faithful wearing of functional appliance.

Power Scope appliance is the latest innovation and refinement of fixed functional appliances in Class II correction which is a direct derivative of the Herbst Type II appliance.

Dr Andy Hayes worked in conjunction with American Orthodontics to develop Power Scope appliance which is an inter-maxillary Class II corrector appliance designed to address the critical needs of the orthodontist, including patient comfort and acceptance, extensive range of motion, and simple installation. (Figure 1) This case report presents a non-extraction approach in the treatment of skeletal Class II using the Power Scope 2.



Figure 1: Power scope 2 Appliance Kit: (A) Hex screw (B) Crimpable shims (C) Driver magnets (D) Power scope left and right arms.

Appliance Design

Power Scope is a semi-rigid telescoping system which is delivered as a one-size-fits-all appliance with right and left pre-assembled arm with attachment nuts for quick and easy chairside application. The appliance is a wire to-wire installation with attachments placed mesial to the first molar in the maxillary arch and distal to the canine of the mandibular arch. NiTi spring mechanism delivers 260 grams of force for continuous activation during treatment.

This appliance is low profile and less bulky for more esthetic facial appearance, patient-friendly design, telescopic device that does not displace during treatment thus more patient friendly.

Case Report

A 20 year-old female presented with a chief complaint of forwardly placed upper front teeth. Extraoral clinical examination revealed a convex profile with an orthognathic maxilla (dentoalveolar protrusion), a retrognathic mandible and a horizontal growth pattern. The patient presented a Skeletal Class II malocclusion and an intra-oral examination revealed the patient exhibited an overjet of 7 mm and an overbite of 4 mm. Molar relation was Angle's Class II, Division 1 malocclusion and a scissor bite with respect to 27 and 57 along with constricted maxillary arch. She had an average

nasiolabial angle, deep mentolabial sulcus and protrusive upper lip respectively. (Figure 2 and 3).



Figure 2: (A, B and C)- Pre-Treatment extraoral pictures.



Figure 3: (A, B, C, D, E)- Pre-Treatment intraoral pictures

Pretreatment cephalometric readings shows Skeletal class II malocclusion with an increased ANB angle, retrognathic mandible with decreased SNB angle, reduced mandibular length and an average growth pattern towards horizontal and a reduced lower anterior face height. Dental parameters portray Proclined maxillary and mandibular incisors. Upper molar to Rickett's Pterygoid vertical was increased whereas lower molars to PTV was reduced. Soft tissue analysis shows an average nasiolabial angle, increased upper lip strain

and decreased mento-labial angle respectively. (Figure 4)(Table1).

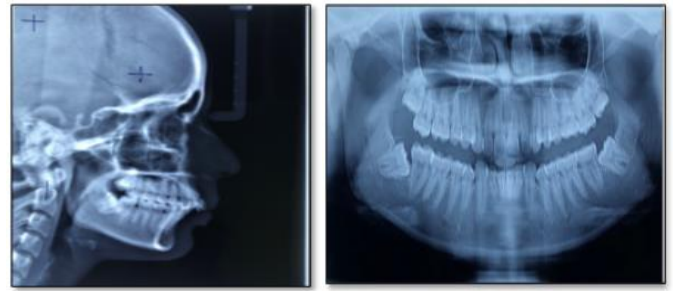


Figure 4: Pre-Treatment Lateral Cephalogram and OPG.

Treatment Objectives

To correct the skeletal class II malocclusion, correct the scissor bite with maxillary right upper second molar, improve facial profile, achieve adequate overbite and overjet relations and to obtain Class I canine and molar relation without extracting teeth.

Treatment Plan

A non-extraction approach was undertaken using MBT 0.018" x 0.025" slot preadjusted appliance. After leveling and aligning, PowerScope2 was chosen to advance the mandible into a Class I relationship followed by finishing and detailing.

Treatment Progress

Treatment was started using 0.016" NiTi in both arches. A transpalatal arch with a distal extension was banded on the molars which also aided in correcting the scissor bite with maxillary right second molar. (Figure 5)



Figure 5: Transpalatal arch with distal extension

Leveling and alignment was completed in 10 months time period and 0.017" × 0.025" stainless steel wire was placed in both the arches. Before inserting the mandibular 0.017" × 0.025" stainless steel arch wire, 10° labial root torque is given in the arch wire in the mandibular incisor segment to prevent labial proclination,

Appliance Insertion and Activation-

Unlike other Class II correctors, there was no need for assembly, taking measurements or appliance manipulation.

The appliance allows wire-to-wire installation with attachments placed mesial to the first molar in the maxillary arch and distal to the canine of the mandibular arch generating a horizontal directed force. Activation dot marking for visual reference is provided at the push rods of the appliance (right and left) which helps us to determine if the appliance is activated or not. If the dot mark is exposed, it indicates the appliance is inactive and to reactivate the appliance Crimpable shims are added to the shaft.



Figure 6: (A and B) – Power Scope insertion and activation

The Power Scope was employed for a period of seven months and following its removal, Class II vertical elastics (5/16,4oz) was used to achieve interdigitation and to support achieved sagittal correction.

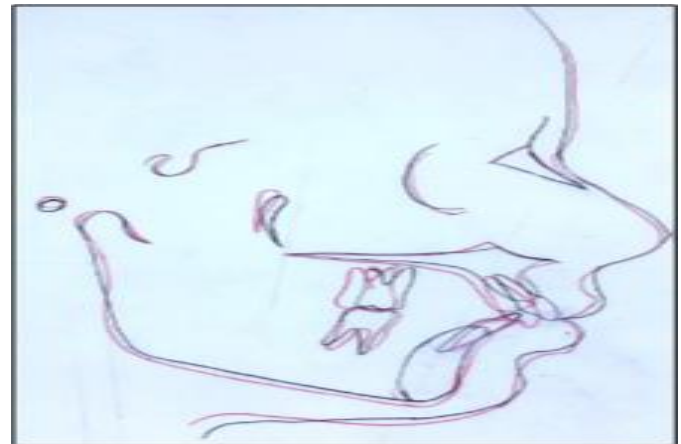


Figure 7: Superimposition Pre and Post Treatment

Discussion

Many treatment approaches and various appliances have been endeavored for correcting the Class II malocclusion which can be as a result of skeletal abnormalities. Class II malocclusions due to mandibular retrusion are most treated with functional orthodontic appliances. A functional appliance creates orthopedic force directed at the mandibular condyle. These appliances produce skeletal correction by initiating remodeling changes at the mandibular condyle and glenoid fossa as well as,

repositioning the mandibular condyle in the glenoid fossa and autorotation of the mandibular bone. They can be of two types – removable or fixed appliances. Among fixed functional appliance, Power Scope has been added to the inventory recently by American Orthodontics. Literature is abundant with studies on many fixed functional appliances such as Jasper jumper, Herbst, Universal bite jumper, Eureka Spring, and Forsus FRD, but limited reports are currently available with regard to Power Scope. The case discussed here was treated with Power Scope considering its advantage over the conventional ones. The Power Scope was a fixed one-piece appliance available in one size suiting all Class II patients when compared to the ones used until now. One-piece concept prevents the dislodgment of the appliance on various jaw movements. Moreover, the size selection, ordering the appliance, and delay in receiving the appliance could be all avoided as the appliance is unisized. Customization of the appliance could be done with the help of Crimpable shims supplied along with Power Scope armamentarium. The appliance allows the quick and easy wire-to-wire installation. The ball and socket joint at the two ends of the appliance allows excellent jaw movements reducing much of patient discomfort. This case report illustrates the skeletal, dental, and soft tissue changes after treatment with Power Scope fixed functional appliance.

On comparing the cephalometric outcomes, a considerable improvement in skeletal, dental, and soft tissue parameters was observed at the end of Power Scope treatment. The posttreatment cephalometric measurements revealed favorable sagittal skeletal changes. A slight change in SNA angle (80°) and reduction in effective maxillary length by 2.5mm was observed all throughout the treatment. A mandibular advancement was clearly evident as SNB angle

increased from 77° to 79° along with an increase in mandibular length by 3.5mm and n perpendicular to pogonion increased by 6mm. A3° reduction in ANB angle was observed. A mild increase in lower facial height was noticed at the end of the treatment. (Table 1) The maxillary incisors angulation reduced by 6 degrees whereas mandibular incisors proclined 4° after PowerScope correction. The slight proclination at the end of the treatment could be attributed to the force concentrated in the lower anterior segment during fixed functional appliance treatment. However, the second molar to molar consolidation in both arches, cinching off the lower archwire, and use of pretorqued wire before insertion of the PowerScope has helped us to counteract the protrusive effect on mandibular incisors. Upper molars distalize by 2mm and intruded by 1 mm whereas lower molars moved forward by 3mm. (Table 1)

Parameter	Pre-Treatment	Post- Treatment
Skeletal Parameters		
SNA	84 ⁰	83 ⁰
SNB	77 ⁰	79 ⁰
ANB	7 ⁰	4 ⁰
N perp. To A	+3 mm	+3 mm
N perp. To pog	-6 mm	0 mm
GoGn to SN	30 ⁰	29 ⁰
FMA	20 ⁰	19 ⁰
Angle of inclination	84 ⁰	87 ⁰
Lower anterior face height	55mm	57 mm
Eff. Maxillary length	84.5 mm	82 mm
Eff. Mandibular length	96.5 mm	99 mm
Y-axis angle	67 ⁰	67 ⁰

Facial axis angle	+1	+3
Sum of post. Angles	390 ⁰	391 ⁰
DENTAL PARAMETERS		
U1 to NA	33 ⁰	27 ⁰
U1 to NA	5 mm	4 mm
U1 to SN	107 ⁰	107 ⁰
L1 to NB	35 ⁰	39 ⁰
L1 to NB	8 mm	8 mm
L1 to A Pog	4 mm	5 mm
L1 to mand. Plane angle	109 ⁰	115 ⁰
Interincisal angle	103 ⁰	113 ⁰
U6-Ptv	21	19
U6-Nasal floor	24	23
L6-ptv	17	20
Soft Tissue Parameters		
E line to L lip (mm)	-3 mm	+2 mm
S line to U lip (mm)	+5 mm	+2 mm
Nasolabial angle (degrees)	110 ⁰	110 ⁰

Table 1: Pre-Treatment and Post-Treatment cephalometric readings.

Conclusion

Extraction correction of Class II malocclusion due to functional mandibular retrusion should be avoided as it can lead to detrimental changes in the soft tissue profile of the patient. Such patients will be very well benefited by treatment using Class II correctors such as Power Scope. Excellent results can be achieved by limiting the side effects, minimizing the need for patient compliance, and avoiding appliance breakage. Power Scope could be one of the best treatment options for Class II correction,

especially in noncompliant patients with a drastic improvement in the soft tissue profile and esthetic appearance of the patient by the sagittal forward displacement of mandible ensuring excellent long-term stable results.

References

1. Hägg U, Pancherz H. Dentofacial orthopaedics in relation to chronological age, growth period and skeletal development. An analysis of 72 male patients with class II division 1 malocclusion treated with the herbst appliance. Eur J Orthod 1988; 10(3): 169-76.
2. Pancherz H, Anehus-Pancherz M. Muscle activity in class II, division 1 malocclusions treated by bite jumping with the Herbst appliance. An electromyographic study. Am J Orthod 1980; 78(3): 321-9.
3. Tulloch JF, Phillips C, Koch G, Proffit WR. The effect of early intervention on skeletal pattern in class II malocclusion: A randomized clinical trial. Am J Orthod Dentofacial Orthop 1997; 111(4): 391-400.
4. O'Brien K, Wright J, Conboy F, et al. Effectiveness of early orthodontic treatment with the twin-block appliance: A multicenter, randomized, controlled trial. Part 1: Dental and skeletal effects. Am J Orthod Dentofacial Orthop 2003; 124(3): 234-43.
5. Marsico E, Gatto E, Burrascano M, Matarese G, Cordasco G. Effectiveness of orthodontic treatment with functional appliances on mandibular growth in the short term. Am J Orthod Dentofacial Orthop 2011; 139(1): 24-36.
6. Antonarakis GS, Kiliaridis S. Short-term anteroposterior treatment effects of functional appliances and extraoral traction on class II malocclusion. A meta-analysis. Angle Orthod 2007; 77(5): 907-14.

7. Graber TM, Rakosi T, Petrovic A. Dento facia lorthopedics with functional appliances. St. Louis: C.V. Mosby Co.;1997.
8. McNamara JA Jr. Components of class II malocclusion in children 8-10 years of age. Angle Orthod 1981; 51:177-202.
9. Cozza P, Baccetti T, Franchi L, Toffol L D, McNamara J A. Mandibular changes produced by functional appliances in Class II malocclusion: A systematic review. Am J Orthod Dento facial Orthop 2006; 129(5): 599.e1-12.
10. Cetlin NM, Ten Hoeve A. Nonextraction treatment. J Clin Orthod. 1983; 17:396–41
11. Pancherz H, Ruf S, Kohl has P. “Effective condylar growth” and chin position changes in Herbst treatment: A cephalometric roentgenographic long-term study. Am J Orthod Dentofacial Orthop. 1998; 114:437–46.
12. Heinig N, Göz G. Clinical application and effects of the Fors us spring. A study of a new Herbst hybrid. J Oro fac Orthop. 2001; 62:436–50.